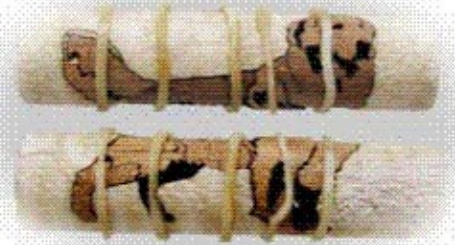


Instructions for the Golden Retriever Pen Inlay Kit



The Golden Retriever inlay kit has a total of 23 pieces. Some are quite small so the best way to start is to lay out the pieces on a clean work area and using the drawing at the bottom of this instruction sheet as a guide, make sure you've got all the pieces. We'll be assembling the pieces in numerical order. Slide the brass tube from your pen kit into the maple background barrel and put the first 8 pieces in place. Secure these pieces as you go with the supplied elastic bands. Carefully remove the brass tube at this point and lock all the pieces together using thin CA glue. Be careful not to get any glue in the openings where pieces still have to be positioned. Fig#1 shows you what your tube should look like up to this point. Cut or scrape away any parts of the elastics so you can insert the remaining pieces into the blank. Slide the brass tube back into the barrel (you might have to sand the inside a bit to get a smooth fit). Next insert pieces 9 through 13, remove the brass tube and apply thin CA glue all over these 5 pieces. Once the glue has cured, insert the brass tube and fit pieces 14, 15 and 16 in place, remove the brass tube and apply thin CA to these pieces. Repeat these steps for the remaining 7 pieces, remove the brass tube and flood all areas of the barrel with thin CA glue. Set aside to cure.

FIG. 1



Now we'll glue the brass tube into the blank. Check the fit of the tube as you might have to lightly sand the inside

of the blank for a good fit. If you do, wrap a small dowel with 100G sandpaper and sand the inside of the barrel until the tube fits smoothly. Use 2-part epoxy to glue in the brass tube. Make sure the tube is perfectly centered so there's the same amount of space on either end. Once the glue has cured, sand the ends flush with the brass tube using a belt or disc sander. Don't use a barrel trimmer. Now you can mount the blank on the lathe for final turning and finishing. Apply whatever finish you're comfortable with as they all work well with these inlay kits. E-mail me at kallenshaan@cox.net with any thoughts or ideas regarding this or any of our other kits.

